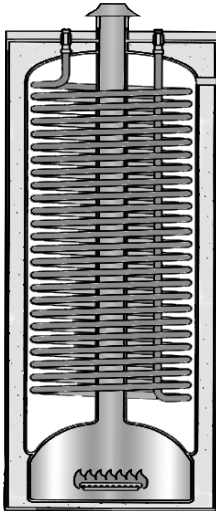


Domestic Water and Space Heating All In One

Double Duty

Atmospheric and Power Vented Gas Water Heaters

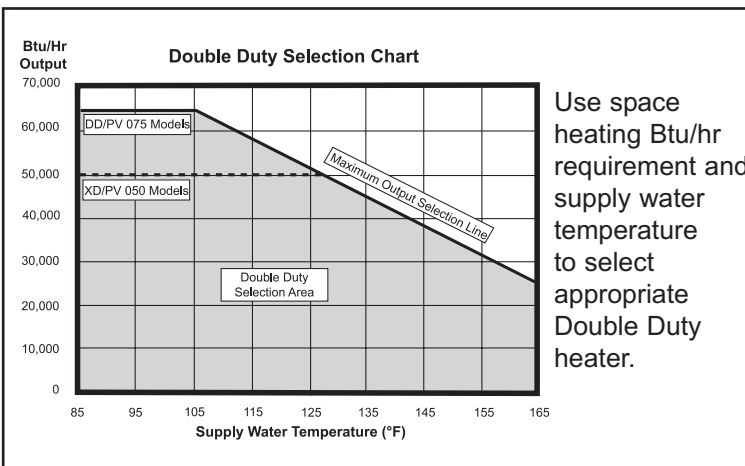
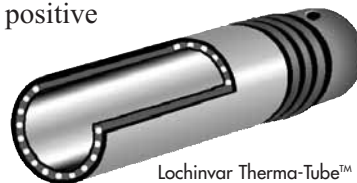
How It Works



The Double Duty, like our other popular, residential water heaters, heats water for domestic use and stores it in a triple tested, glass-lined storage tank. While in the tank, the domestic hot water transfers heat to the Therma-Tube heat exchanger that is immersed inside the tank. Within these tubes, water for space heating is circulated and heated. This internal heat transfer allows the Double Duty to serve two purposes. It provides hot water for domestic use while maintaining a comfortable space temperature through hydronic or radiant heating.

Anti-Leak

With the Therma-Tube anti-leakage system heating fluid is separated from domestic water by a double-wall tube that utilizes an internal leak path to the exterior. Heating fluid is circulated in a primary metallic inner tube. A secondary, thermally stabilized, high-density polyethylene tube surrounds the primary tube. Monofilament lines between the two walls provide positive leak path channels to the outside of the unit.



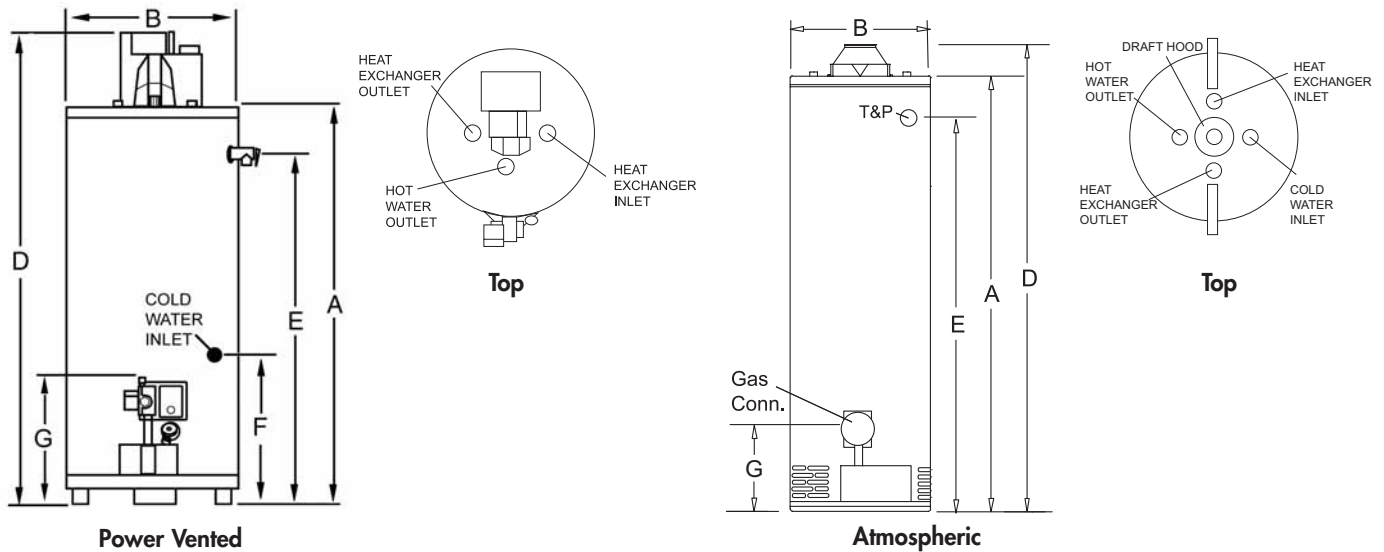
Standard Features

- Non CFC Foam Insulation
- Heavy-Gauge, Glass-Lined Steel Tank
- Magnesium Tank Saver Anode
- Factory Installed Dielectric Nipples
- Brass Drain Valve
- T&P Relief Valve Factory Supplied
- 10 Year Limited Tank Warranty
- 6 Year Limited Warranty on Parts (See Warranty for Details)

Additional Features for Power Vented Models:

- Vertical or Sidewall Venting
- Vents up to 30 ft. with 3" PVC
- Vents up to 60 ft. with 4" PVC

Dimensions and Specifications

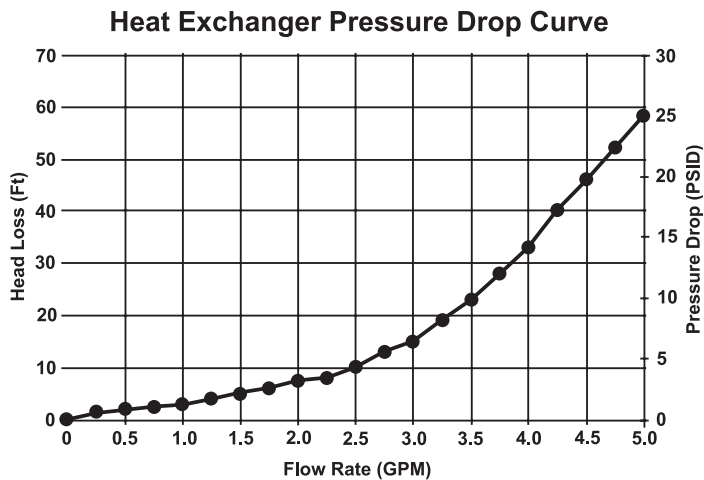


Model Number	Gal. Cap.	Btu/hr Input	GPH @ 90°F Rise	AFUE	Space Heating (Btu/Hr)	A	B	D	E	F	G	Vent Size	Shipping Weight
Atmospheric Models													
XDN050G	47	65,000	70	80.0	51,000	56"	22"	59-1/4"	50"	—	13"	4"	174
XDL050G (LP)	47	61,000	66	80.0	49,000	56"	22"	59-1/4"	50"	—	13"	4"	174
DDN075	73	76,000	82	82.0	65,000	59-1/2"	26"	63-3/4"	53"	—	16-1/2"	4"	303
DDL075 (LP)	73	76,000	82	82.0	65,000	59-1/2"	26"	63-3/4"	53"	—	16-1/2"	4"	303
Power Vent Models													
XPN051	47	65,000	70	82.0	52,000	55-1/2"	22"	67"	49"	30-3/4"	16-3/4"	3"	197
XPL051 (LP)	47	63,000	68	82.0	51,000	55-1/2"	22"	67"	49"	30-3/4"	16-3/4"	3"	197
PVN075	73	75,000	81	82.0	60,000	60-1/4"	26"	71-3/4"	53"	29-1/2"	19"	3"	286
PVL075 (LP)	73	73,000	79	82.0	59,000	60-1/4"	26"	71-3/4"	53"	29-1/2"	19"	3"	286

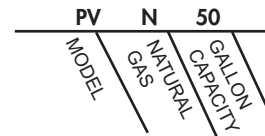
Notes: "X" indicates models equipped with the Shield Combustion System.
 All water connections are 3/4" NPT
 All gas connections are 1/2" NPT.
 Performance data is based on manufacturer's test results.

110 VAC 60 HRZ 2.1 AMPS required for Power Vent models.
 Models fired above 75,000 Btu/Hr are certified to ANSI Z21.10.3
 and are not required to meet the NAECA or FVIR standard.

Double Duty Pressure Drop



FOR EASE IN ORDERING
 BY MODEL NUMBER



This heater is 47 gallon Double Duty Power Vent natural gas water heater.

All models available with a Ten Year Limited Warranty against tank failure.
 All parts are warranted for six years.
 Three year limited warranty on all models when installed in a commercial application.



Lochinvar
 High Efficiency Water Heaters, Boilers and Pool Heaters



Lochinvar Corporation • 300 Maddox Simpson Pkwy • Lebanon, TN 37090 • 615-889-8900 / Fax: 615-547-1000

www.Lochinvar.com